

EMERGENCY PREPAREDNESS MERIT BADGE

TROOP 236

1. Earn First Aid Merit Badge.
2. Do the following:
 - (a) Tell what you would do to prevent injury and possible loss of life to yourself and others in each of the following emergencies:
fire or explosion at home or in a public building

car stalled in a blizzard or in a desert

motor vehicle accident

mountain accident

food poisoning

boating accident

search for lost person

lost or marooned group

gas leak

earthquake

flood

tornado or hurricane

atomic emergency

avalanche (snow or rock)

(b) Show that you know what to do in at least TWO of the above.

3. Show how you could safely save a person from the following:
 - (a) touching a live electric wire
 - (b) A room with carbon monoxide or other fumes or smoke
 - (c) Clothes on fire
 - (d) Drowning using non swimming rescues (including ice accidents)
4. Tell the things a group of Scouts should be prepared to do, the training needed, and the safety precautions to be taken for the following emergency service:
 - (a) Crowd and traffic control
 - (b) Messenger service and communication
 - (c) Collection and distribution services
 - (d) Group feeding, shelter, and sanitation
5. Take part in an emergency service project, either real or a practice drill.
6. Show three ways of attracting and communicating with rescue planes.
7. With another person, show a good way to move an injured person out of a remote and rugged area, conserving the energy of the rescuers.
8. Do the following:
 - (a) Prepare a written plan for mobilizing your troop when needed to do emergency service. If there is a plan, explain it. Tell your part in making it work.

(b) Take part in at least one troop mobilization. Describe your part.

(c) Show the personal “emergency pack” which you have prepared to be ready for a mobilization call. Show a family kit (suitcase or box) for use by your family in case an emergency evacuation is needed. Explain the need.

9. Show proper use of ropes and lines for rescue work by doing the following:
 - (a) Tie knots for joining lines. Tie knots for shortening or adjusting lines. Tie knots for lashings.
 - (b) Lower a person from a height sufficient to show how.
 - (c) Coil and accurately throw light and heavy 50-foot lines.

EMERGENCY SITUATIONS

Fire or Explosion at home and in a public building

Take a hazard (danger point) check list

Clear closets, attic, cellar, and other storage areas of flammable things

Throw away half empty cans of old paint and varnish, paint-soaked brushes, oily rags, old papers, and empty cartons

Flammables in tight cans

Check around the furnace and hot water heater

Check for broken or bare wires

Don't over load circuits

Line up your defense

 Garden hose to reach every room

 Fire extinguishers

 Emergency numbers

Priorities

1. Warn everyone in the house.
2. Keep calm---don't panic
3. Call the fire department
4. If no phone call for help from the nearest window.
5. Keep doors closed.
6. Turn of gas and electricity.
7. If smoke is thick, stay low
8. If you can go downstairs --- cautiously close to the wall.
9. If trapped tie sheets and blankets together.
10. If you can safely drop from a window to the ground or to a porch roof.
11. Check for small children.
12. Remove unconscious victims.

Car

Use all of the parts

Horn

Air cleaner top to dig

Burn oil in sand

Oil dip stick for a skewer

Hood for reflector

Car for shelter

convex lenses like magnifying glass

Burning tire --- 3-4 hours

Remove headlamp for signaling

Blizzard

Stay with car

Don't panic

Hazard signals

Bright colored cloth from radio antenna

Run engine---crack window

Keep dome light on

Shelter

Lighter to start fire

Three small fires as SOS signal

Desert

Stay with car

Emergency light

Build a fire

Sit in shade

Don't throw away any clothing

Solar still

Dew

Desert plants

Motor Vehicle Accident

Call for help

ABC's

Mountain Accident

Buddy system

Never travel after dark

Stick to trails

Be prepared before you go

Most common accident is a fall. Don't take unnecessary chances. Control your center of gravity. Test every support before you have to rely on it. Never step on anything you can step over.

Think ahead.

Fording a stream, stop and study it. Hiker's pole or rope. Unfasten your pack.

Lightning

Never camp in a gully or old dried-up stream bed.

Lost --- STOP

Food Poisoning

Plan menu properly.

Don't "stretch" ice in your cooler.

Mushrooms

Refrigerate properly. Bacteria multiply fast when food is warm.

Botulism is most serious form of food poisoning. Usually from home canning. If any question, boil food for 15 minutes.

Boating Accident

Check equipment

PFD

Fire extinguishers, proper lights, extra paddle, anchor, etc. Chain outboard motor to boat.

Don't exceed capacity.

Watch the weather. Head for home before a storm reaches you.

If boat tips over, hang on

Don't try to swim for land.

Distress signals. SOS, flag upside down, orange emergency balloon, flare.

Lost Person Search

Page 18-19.

Lost

STOP

Travel in straight direction using a sighting system.

In East you might follow a creek downstream. In Canada and in West, many flow away from civilization.

Circle Method of Travel. Mark or blaze tree on two sides. Complete a "spoked" wheel with your base as a hub.

Gas Leak

Asphyxiation

Natural or propane

Carbon Monoxide

Check gas pipes in your home. Use a flashlight.

If you smell gas, turn off the gas at the main valve. Open all windows, call the gas company. Turn off electricity.

Earth Quake

Inside --- Stay there. Get beneath strong support---desk, bench, table

Sit or stand against an inside wall, preferably in basement

Stay away from windows and outside doors

Outdoors --- Stay there. Don't run near buildings. Head for the nearest vacant lot or widest street so you will not be hit by falling wires or other objects.

Once the tremors are over, check for leaking gas pipes if you are at home. If you smell gas, open the windows and doors. Turn off the main gas valve at the meter and then get out until told it is safe.

Stay clear of any buildings or structures that look damaged.

If you are in a car, get the driver to pull off the road and park safely just as soon as he can.

Don't park under power lines or other wires. Stay in the car until the tremor is over. When you continue on, go slowly and help the driver watch for fallen objects or damaged roads.

Once an earthquake is over, stay home. Follow the advice of your parents and community officials.

Flood

At the first warning of a serious flood, you should store drinking water, pack dishes, canned and other nonperishable food, utensils, and a flashlight. Keep a transistor radio with you and stay tuned to a local station for instructions.

If you have time, bring outside equipment in or tie it down. Disconnect all electric appliances and turn off gas appliances too.

During the actual flood, do not attempt to cross fast-moving water if it is above your knees.

Do not try to cross or drive over a flooded road. You may get stranded or trapped.

Once flood waters go down, do not use fresh food that was in contact with flood water. If you have a well, test the water before you drink it. Make sure anything electrical is bone dry before you use it.

Tornado

Tornado season is usually in April, May, and June. A tornado watch means conditions are right for a tornado to develop. A tornado warning means a tornado has actually been sighted.

If there is a tornado warning, open some windows. Then go to a tornado shelter, to your basement, or under heavy furniture in the center part of your house. At school, follow the instructions. Usually the safest place is an interior hallway on the lowest floor. The auditorium or gym with a wide-span roof is not safe. At a shopping center, go to a designated shelter area or into a store basement. Do not stay in a parked car.

In open country, you'll probably see the tornado coming. Move away from the tornado at a right angle to its path. If there is not time to escape, lie flat on the ground in the lowest spot.

Hurricane

Generally, you should take the same precautions as for a flood. Follow the advice of the hurricane watchers. If you have time, close and board up all windows except for one or two on the side of the house away from the path of the storm. You may have to leave your home, if you live on the coast. Go where officials tell you you can get emergency housing and food.

Nuclear Emergency

An attack warning signal is a 3- to 5-minute wavering sound on sirens or a series of short blasts. Listen to a local radio station. Go to a shelter if one is available. If you cannot get to a shelter, head for the basement or an inner hall, a subway, a tunnel, a storm cellar, or a crawl space under the house. Stay in until you are instructed to leave.

Avalanche (Snow or Rock)

Never climb in dangerous high country such as the mountains without the aid of an experienced guide. Never throw a rock in high country. Stay out of the mountains after a heavy snowfall. Let the snow settle for at least 3 days. If you ski, stay off short, steep slopes. Avoid the lee side (out of the wind) side of the mountain. Especially stay away from an overhanging cornice.

If you accidentally get caught in an avalanche, get your skis off fast and try to “swim” to the surface. A backstroke works best. Try to keep on your back with your feet pointed downhill. Just before the avalanche comes to a standstill, use every bit of strength you have to force your head and upper body to the surface. Do everything you can to create air space around your face and head. If you see others get caught in an avalanche, watch them carefully so you will know about where they disappeared. Remember a second avalanche very often follows the first.

SAVING LIVES

Contact with a Live Wire

Remove the plug. Just be sure the wire is not frayed. Turn off the main switch fast. Separate the victim from the wire using a dry handkerchief, towel, sheet, or other dry cloth. Encircle the wire with it, and pull the wire from the victim. Don't touch the wire, the victim, or any grounded object such as a water pipe. You can also use a dry stick (broomstick) or a rolled-up newspaper to push away the wire. When you try to separate the victim from the wire, be sure you are not standing on a wet surface. As soon as you have separated the victim from the wire, call for help. Use C.P.R. if indicated. If a live wire is down outdoors, call the electric company immediately. Rescuing a person in contact with a live power line outdoors is extremely dangerous.

Do not have electrical appliances such as a radio in the bathroom.

Carbon Monoxide, Fumes, Smoke

Never run a car in a closed garage. Carbon monoxide actually replaces the oxygen in your blood, thus causing death. A gas-operated water heater can be responsible for carbon monoxide fumes if it is improperly ventilated.

Get the victim into fresh air as fast as possible. If the victim's breathing has stopped, use C.P.R. and send for help.

The skin of anyone suffering from carbon monoxide poisoning is a bright cherry red. The first symptoms include headache, dizziness, faintness, and ringing in the ears. They yawn and may feel like vomiting. If you feel this way, get outside or to an open window so you can get plenty of fresh air. Once you have taken care of the victim, turn off the gas. Call the gas company.

Clothes on Fire

Stop, drop, and roll. If someone is running with their clothes on fire, tackle him, knock him over, trip him. Better yet, grab anything handy --- a rug, your coat or jacket, a blanket --- and wrap it around him.

Drowning

Reach, throw, row. Do not go into the water unless you are specifically trained and are big enough to handle the victim.

Ice Rescue

Reach, throw, go. Tell the victim to kick as you pull. If you go lie down on the ice, and go spread-eagle. Then reach out with something and pull the victim up. You may also form a human chain with each person lying down on the ice and holding the ankles of the person in front of them.

Hypothermia

This is the lowering of a person's body temperature by a combination of cold, wet, and wind. Remove wet clothing, and warm the person in a sleeping bag. Give warm drinks.

BE PREPARED TO HELP IN AN EMERGENCY

Crowd and Traffic Control

Scouts should not do this alone, but they may assist others. Older Scouts can be used to move a crowd back. Each member holds a 1 1/2- to 2-inch diameter staff, 6 feet long, horizontal at chest height and advances slowly. To direct movement of a crowd, they indicate direction by pointing or blocking. You may also help direct others to food and shelter during an emergency. Trained older Scouts may help control or direct traffic. They must know the basic hand signals for stop, come, and turn. At night, they should use white reflective gloves and wear reflective material.

Messenger Service and Communication

Your Troop may be assigned a service area. Your Troop should then make up a large-scale map of the area and assign sections of that area to each patrol. Patrol members should learn all of the short cuts.

Bicycles can speed up the delivery of messages, but this means bikes must be kept in good riding condition.

Scouts can deliver written messages, but they should always get a written receipt and return the receipt and any answer to the sender.

During an emergency, Scouts might also deliver messages within a control center. They can also take incoming calls and relay information to officials in charge.

Collection and Distribution Services

During and after disasters, many people will be without food and clothing. Scouts may work in central distribution points. Scouts may also be used to distribute leaflets.

Mass Feeding, Shelter, and Sanitation

Scout Troops can set up pots of soup, grates and grills. Scouts may also set up emergency shelter. Scouts normally know a lot about emergency sanitation. They can purify water and build pit latrines.

PLANE SIGNALS

Aluminum-coated rescue blanket

Metal mirror.

Body signals

SOS

Require doctor. Serious injuries

Require medical supplies

Unable to proceed

Require food and water

Indicate direction to proceed

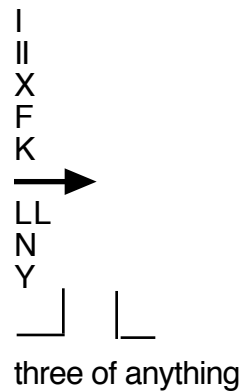
Am proceeding in this direction

All well

No

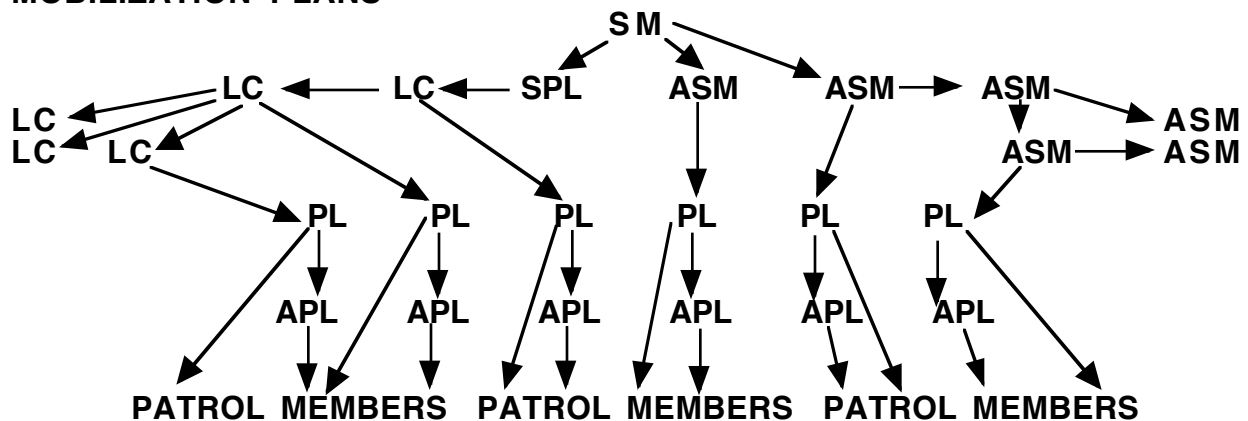
Yes

Not understood



Distress Signal

MOBILIZATION PLANS



EMERGENCY PREPAREDNESS KIT

- Raingear and hat
- Change underwear and socks
- Shaving kit
- Sleeping bag or blanket
- Maps of local area
- 50 feet nylon cord
- Hand ax and knife
- Water purification tablets
- Mess kit and utensils
- Canteen
- Flashlight with extra batteries
- Hard hat
- Clothing appropriate to weather
- Personal first aid kit
- Matches in water proof container
- Emergency ration, well-wrapped (Hard candy and meat sticks)
- Small notebook and pencil
- Handkerchief
- Extra band aids
- Compass
- Watch
- Tissues
- Work gloves